

Inhaltsübersicht **3**
Content overview

Produktführer **4 - 5**
Product guide

Stichwortverzeichnis **6 - 7**
Alphabetical index **8 - 9**

Care Serien **11**
Care Series



Sanitary Care

Smart &
Special Care

Living Care

ALUMINUM SERIES

Cavere Care

| | |
|--------------------|-----------|
| Cavere | 11 |
| Cavere Chrome | 51 |
| Cavere Accessories | 87 |

STAINLESS SERIES

Inox Care

| | |
|------------------|------------|
| Inox Care | 107 |
| Inox Accessories | 143 |

POLYMERE SERIES

Nylon Care

| | |
|-----------------------|------------|
| NEW Verso Care | 159 |
| Nylon 300 | 185 |
| Nylon 400 | 213 |
| Nylon Accessories | 255 |

Special Care

| | |
|---------------------|------------|
| Special Adipositas | 279 |
| Special PSY | 292 |
| E-Taster / E-Button | 301 |

Ascento

| | |
|---|------------|
| Modulare Sitzlösung Modular Seating Solution | 319 |
|---|------------|

TW

| | |
|--|------------|
| NEW Designlösungen für Trennwände / TW Design Solutions for Toilet Partitions / TW | 333 |
|--|------------|



| | |
|----------------------------|------------|
| Montagesets Fixing Sets | 361 |
|----------------------------|------------|



| | |
|--|------------|
| Bestellnummer / Order Number | 375 |
| Planungshilfen Assistance in Planning | 421 |



Bereich / area



| Stützklappgriffe Lift-up support rails | |
|--|---------------------------------|
| Cavere Care ▶ | Cavere 17 - 23 |
| | Cavere Chrome 57 - 61 |
| Inox Care ▶ | Inox Care 113 - 116 |
| | Verso Care <i>NEW</i> 165 - 169 |
| Nylon Care ▶ | Nylon 300 189 - 191 |
| | Nylon 400 217 - 221 |
| Special Care ▶ | Special Care 285 |



| Winkelgriffe 90° Grab rails 90° | |
|---|----------|
| Cavere | 25 - 26 |
| Cavere Chrome | 64 |
| Inox Care | 119, 123 |
| Verso Care <i>NEW</i> | 172, 177 |
| Nylon 300 | 193, 201 |
| Nylon 400 | 223, 230 |
| Special Care | 286, 289 |



| Winkelgriffe 135° Grab rails 135° | |
|---|-----|
| Cavere | 27 |
| Cavere Chrome | |
| Inox Care | 120 |
| Verso Care <i>NEW</i> | 173 |
| Nylon 300 | 193 |
| Nylon 400 | 223 |
| Special Care | 286 |



Bereich / area



| Haltegriffe Grab bars | |
|---------------------------------|---------------------------|
| Cavere Care ▶ | Cavere 28 |
| | Cavere Chrome 66 |
| Inox Care ▶ | Inox Care 121 |
| | Verso Care <i>NEW</i> 174 |
| Nylon Care ▶ | Nylon 300 194 - 196 |
| | Nylon 400 224 |
| Special Care ▶ | Special Care 287 |



| Brausehalterstange Shower head rails | |
|--|-----------|
| Cavere | 30 - 31 |
| Cavere Chrome | 67 - 68 |
| Inox Care | 122 |
| Verso Care <i>NEW</i> | 176 |
| Nylon 300 | 198 - 199 |
| Nylon 400 | 226 - 227 |
| Special Care | 288, 299 |



| Duschhandläufe Shower handrails | |
|---|----------------|
| Cavere | 29, 31 - 33 |
| Cavere Chrome | 66, 68 - 72 |
| Inox Care | 121, 123 - 125 |
| Verso Care <i>NEW</i> | 175 - 179 |
| Nylon 300 | 197, 199 - 201 |
| Nylon 400 | 225, 228 - 231 |
| Special Care | 288 |



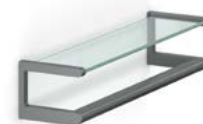
Bereich / area



| Washbecken Wash basin | |
|---------------------------------|------------------|
| Cavere Care ▶ | Cavere 50 |
| | Cavere Chrome 86 |
| Inox Care ▶ | Inox Care |
| | Verso Care |
| Nylon Care ▶ | Nylon 300 |
| | Nylon 400 |
| Special Care ▶ | Special Care |



| Wandstützgriffe Wall support | |
|--|-----|
| Cavere | 47 |
| Cavere Chrome | 85 |
| Inox Care | 139 |
| Verso Care <i>NEW</i> | 170 |
| Nylon 300 | 211 |
| Nylon 400 | 251 |
| Special Care | |



| Ablagen Bathroom glass shelf | |
|--|----------------|
| Cavere | 92 |
| Cavere Chrome | 103 |
| Inox Care | 148 |
| Verso Care | |
| Nylon 300 | |
| Nylon 400 | 252, 261 - 262 |
| Special Care | |



Rückenlehnen
Backrests

| | |
|-----------------------|---------|
| Cavere | 24 - 25 |
| Cavere Chrome | 62 - 63 |
| Inox Care | 118 |
| Verso Care <i>NEW</i> | 192 |
| Nylon 300 | |
| Nylon 400 | 222 |
| Special Care | |



WC-Bürstengarnitur
Toilet brush set

| | |
|---------------|-----------|
| Cavere | 89 |
| Cavere Chrome | 100 |
| Inox Care | 146 |
| Verso Care | |
| Nylon 300 | |
| Nylon 400 | 256 - 257 |
| Special Care | |



Papierrollenhalter
Toilet roll holder

| | |
|---------------|-----------|
| Cavere | 88 |
| Cavere Chrome | 100 |
| Inox Care | 144 |
| Verso Care | |
| Nylon 300 | |
| Nylon 400 | 258 - 259 |
| Special Care | |



Hygienebeutelspender
Hygiene bag dispenser

| | |
|---------------|-----|
| Cavere | 89 |
| Cavere Chrome | |
| Inox Care | 145 |
| Verso Care | |
| Nylon 300 | |
| Nylon 400 | 256 |
| Special Care | |



Duschablagen
Shower baskets

| | |
|---------------|---------|
| Cavere | 90 - 91 |
| Cavere Chrome | 101 |
| Inox Care | 147 |
| Verso Care | |
| Nylon 300 | |
| Nylon 400 | 260 |
| Special Care | |



Sitze
Seats

| | |
|-----------------------|-----------|
| Cavere | 35 - 39 |
| Cavere Chrome | 75 - 77 |
| Inox Care | 127 - 131 |
| Verso Care <i>NEW</i> | 183 - 184 |
| Nylon 300 | 203 - 204 |
| Nylon 400 | 233 - 240 |
| Special Care | 291 |
| Ascento | 320 - 332 |



Duschvorhang/-stangen
Shower curtain rails

| | |
|-----------------------|-----------|
| Cavere | 39 - 43 |
| Cavere Chrome | 78 - 81 |
| Inox Care | 132 - 135 |
| Verso Care <i>NEW</i> | 180 - 181 |
| Nylon 300 | 205 - 207 |
| Nylon 400 | 241 - 247 |
| Special Care | 294 - 298 |



Duschspritzschutz
Showerguard rail

| | |
|---------------|-----------|
| Cavere | 44 - 45 |
| Cavere Chrome | 82 - 83 |
| Inox Care | 136 - 137 |
| Verso Care | |
| Nylon 300 | 208 - 209 |
| Nylon 400 | 248 - 249 |
| Special Care | |



Spiegelhalter/Spiegel
Mirror holders/Mirrors

| | |
|---------------|--------------|
| Cavere | 48 - 49, 97 |
| Cavere Chrome | |
| Inox Care | 140 - 141 |
| Verso Care | |
| Nylon 300 | 212 |
| Nylon 400 | 252-254, 270 |
| Special Care | |



Abfallbehälter
Waste bin

| | |
|---------------|-----------|
| Cavere | 95 |
| Cavere Chrome | 106 |
| Inox Care | 153 - 154 |
| Verso Care | |
| Nylon 300 | |
| Nylon 400 | 269, 271 |
| Special Care | |



Handtuchhalter, Haken
Towel holder, hooks

| | |
|---------------|----------------------|
| Cavere | 96, 98 |
| Cavere Chrome | 103 - 105 |
| Inox Care | 151 - 152, 155 - 156 |
| Verso Care | |
| Nylon 300 | |
| Nylon 400 | 264 - 276 |
| Special Care | 296 |



Glashalter, Seifenablage
Tumbler holder, soap dish

| | |
|---------------|-----------|
| Cavere | 93 - 94 |
| Cavere Chrome | 102 |
| Inox Care | 149 - 150 |
| Verso Care | |
| Nylon 300 | |
| Nylon 400 | 262 - 263 |
| Special Care | |

Stichwortverzeichnis

| | Cavere Care | | Inox Care | Nylon Care | | | Smart & Special Care |
|-------------------------------------|-------------|---------------|--------------|--------------|--------------|---------------|----------------------|
| | Cavere | Cavere Chrome | | Verso Care | Nylon 300 | Nylon 400 | |
| A bfallbehälter | 95 | 106 | 153-154 | 269, 271 | 269, 271 | 269, 271 | |
| Ablagen, Ablagekonsolen | 90-93 | 101-103 | 147-148, 150 | 260-263 | 269-263 | 252, 260-263 | |
| Adipositasprodukte | | | | | | | 284-291 |
| Antibakterieller Schutz | 451 | 451 | | 451 | 451 | 451 | 451 |
| Armlehne nachrüstbar | 38 | | 130 | | | 238 | |
| Ascento | 320-332 | | | | | | |
| B adetuchhalter | 28, 96 | 103-104 | 151 | 264-267 | 264-267 | 264-267 | |
| Badezimmerlüftungen | | | | 277 | 277 | 277 | |
| Becher, Becherhalter | 94 | 102 | 150 | 263 | 263 | 263 | |
| Bedienhebel | 49 | | 141 | | 212 | 254 | |
| Befestigungen | 363-374 | 363-374 | 363-374 | 363-374 | 363-374 | 363-374 | |
| Beschriftungsschild | | | | 277 | 277 | 277 | |
| Blindabdeckung | 18, 34 | 58, 74 | 117 | 171 | 189 | 221 | |
| Brausehalter | 30 | 67 | 122 | 176 | 198 | 226 | |
| Brausehalterstangen | 30-33 | 67-72 | 122 | 176 | 198-199 | 226-227 | 288, 299 |
| Bürstengarnituren | 89 | 100 | 146 | 256-257 | 256-257 | 256-257 | |
| D eckenabhängungen | 39 | 78 | 132 | 180 | 205 | 241 | 294, 297 |
| Deckenhaken | | | | 275 | 275 | 275 | |
| Desinfektionsspender | | | 149 | | | | |
| Distanzscheibe | 30 | | | | | | |
| Doppelhaken | 98 | 105 | 156 | 273-275 | 273-275 | 273-275 | |
| Duschablagen | 90-91 | 101 | 147 | 260-261 | 260-261 | 260-261 | |
| Duschhandläufe | 29, 31-33 | 66, 68-72 | 121, 123-125 | 175, 178-179 | 197, 199-201 | 225, 228-231 | 288 |
| Duschhocker | 39 | | 131 | 184 | 204 | | |
| Duschsitze | 34-38 | 74-77 | 126-130 | 182-184 | 202-204 | 232-240 | 290-291 |
| Duschspritzschutz | 44 | 82 | 136 | | 208 | 248 | |
| Duschspritzschutzvorhang | 45 | 83 | 137 | | 209 | 249 | |
| Duschvorhänge | 41, 43 | 79, 81 | 133, 135 | 181 | 207 | 243, 245, 247 | |
| Duschvorhangstangen | 40, 42 | 78, 80 | 132, 134 | 180 | 206 | 242, 244, 246 | 294-298 |
| E ckablage | | 101 | | 260 | 260 | 260 | |
| Edelstahlpflegespray | | 106 | 157 | | | | |
| Einhängesitze | 36-38 | 76-77 | 128-130 | | 204 | 236-240 | |
| Ersatzbürsten | 89 | 100 | 146 | 256-257 | 256-257 | 256-257 | |
| Ersatzrollenhalter | 88 | 100 | 144 | 259 | 259 | 259 | |
| E-Taster/Stützklappgriffe | 19-20 | 59-60 | 114-115 | 168-169 | 190 | 218 | 303-312 |
| F unksender/Stützklappgriffe | 21 | 61 | 116 | 167 | 189 | 219 | 313-318 |
| Föhnhalter | 94 | 105 | | | | | |
| G arderobenhaken | 98 | 105 | 155-156 | 272-276 | 272-276 | 272-276 | 296 |
| Gehilfenhalter | 95 | | | | | | |
| Glas, Glashalter | 94 | 102 | 150 | 263 | 263 | 263 | |
| Glasablagen/mit Haltegriff | 92 | 103 | 148 | | | 252 | |
| Glasplattenhalter, Stück | | | 148 | | | | |
| Grundplatte | 18, 34 | 58, 74 | 117 | 171 | | | |
| H aken | 98 | 105 | 155-156 | 272-276 | 272-276 | 272-276 | 296 |
| Haltegriffe | 28 | 66 | 121 | 174 | 194-195 | 224 | 287 |
| Handtuchstangen | 28, 96 | 103-104 | 151 | 264-267 | 194, 264-267 | 264-267 | 296 |
| Handtuchspender | | | 152 | 268 | 268 | 268 | |
| Hocker | 39 | | 131 | 184 | 204 | | |
| Hygienebeutelspender | 89 | | 145 | 256 | 256 | 256 | |
| K ippspiegel | 48 | | 140 | | 212 | 252-253 | |
| Klappsitze | 34-35 | 74-75 | 126-127 | 182-183 | 202-203 | 232-234 | 290-291 |
| Kleiderbügel | | | | 272 | 272 | 272 | |
| Kleiderhaken | 98 | 105 | 155-156 | 272 | 272 | 272 | 296 |
| Kosmetiktuchspender | | | | 268 | 268 | 268 | |
| L üftungsgitter | | | | 277 | 277 | 277 | |

Stichwortverzeichnis

| | Cavere Care | | Inox Care | Nylon Care | | | Smart & Special Care |
|---|--------------|---------------|------------------|--------------|------------------|------------------|----------------------|
| | Cavere | Cavere Chrome | | Verso Care | Nylon 300 | Nylon 400 | |
| M antelhaken | 98 | 105 | 155-156 | 272-276 | 272-276 | 272-276 | 296 |
| Montagehilfe für Haltegriffe | 373 | 373 | | | | | |
| Montageplatte | 368 | 368 | 368 | | 203, 368 | 235, 368 | |
| Montagesets | 364-374 | 364-374 | 364-374 | 364-374 | 364-374 | 364-374 | |
| P apierrollenhalter | 18, 27, 88 | 58, 65, 100 | 117, 144 | 171, 258 | 191, 258 | 220, 258 | |
| Pflegeanleitung | 456 | 456 | 456 | 456 | 456 | 456 | |
| Piktogramme | | | 157 | 277 | 277 | 277 | |
| Planungshilfen | 421-453 | 421-453 | 421-453 | 421-453 | 421-453 | 421-453 | |
| Pflegespray | | 106 | 157 | | | | |
| Puffer | | | 155 | 272 | 272 | 272 | |
| PSY | | | | | | | 294-299 |
| R eservepapierhalter | 88 | 100 | 144 | 259 | 259 | 259 | |
| Rohrplattenhalter | | | 342 | 358 | 358 | 358 | |
| Rollenhalter | | | | 264 | 264 | 264 | |
| Rückenlehne | 24-25 | 62-63 | 118 | | 192 | 222 | |
| S eifenablage, -spender, -schale | 93 | 102 | 149-150 | 262-263 | 262-263 | 262-263 | |
| Sicherheits-Wandhaken | | | | 274 | 274 | 274 | |
| Sitze | 34-39 | 74-77 | 126-131 | 182-184 | 202-204 | 232-240 | 290-291 |
| Spiegel | 48, 97 | | 140 | 270 | 212, 270 | 252-253, 270 | |
| Spiegelhalter | 48, 97 | | | 270 | 270 | 270 | |
| Spiegelleuchte | 49 | | 141 | | 212 | 254 | |
| Suizid vorbeugende Produkte (-PSY) | | | | | | | 294-299 |
| Stützbügel | | | | | | 220 | |
| Stützfüße | | | 337 | 348 | 348 | 348 | |
| Stützgriffe | 16-23, 46-47 | 56-61, 84-85 | 112-116, 138-139 | 164-170 | 188-191, 210-211 | 216-221, 250-251 | 284-285 |
| Stützklappgriffe | 16-23 | 56-61 | 112-116 | 164-169 | 188-191 | 216-219, 221 | 284-285 |
| Symbole | | | 157 | 277 | 277 | 277 | |
| T oilettenpapierspender | | | 145 | | | | |
| Trennwand | | | 334-344 | 345-360 | 345-360 | 345-360 | |
| Trennwandriegel, -schlösser | | | 338 | 350-351 | 350-351 | 350-351 | |
| Türbänder | | | 339 | 351-352 | 351-352 | 351-352 | |
| Türstopperhaken | | | 155 | 272 | 272 | 272 | |
| V ario Duschspritzschutz | 44 | 82 | 136 | | | | |
| Vario Klappsitze | 34 | 74-75 | | | | | |
| Vario Stützklappgriffe | 17-21 | 56-61 | 112-116 | 164-169 | | | |
| Vario Wandstützgriffe | 46-47 | 84-85 | 138-139 | 170 | | | |
| Vorhänge | 41, 43 | 79, 81 | 133, 135 | 181 | 207 | 243, 245, 247 | |
| Vorhangringe | 42 | 80 | 134 | | | 241 | |
| Vorhangstangen | 40, 42 | 78, 80 | 132, 134 | 180 | 206 | 242, 244, 246 | 294-298 |
| W andhaken | 98 | 105 | 155-156 | 272-276 | 272-276 | 272-276 | 296 |
| Wandstützgriffe | 46-47 | 84-85 | 138-139 | 170 | 210-211 | 250-251 | |
| Wannenhandlauf | 29 | 66, 68 | 121 | 175 | 197 | | 288 |
| Waschbecken | 50 | 86 | | | | | |
| WC-Bürstengarnituren | 89 | 100 | 146 | 256-257 | 256-257 | 256-257 | |
| WC-Ersatzbürsten/-kopf | 89 | 100 | 146 | 256-257 | 256-257 | 256-257 | |
| WC-Rollenhalter | 18, 27, 88 | 58, 65, 100 | 117, 144 | 171, 258 | 191, 258 | 220, 258 | |
| Winkelgriffe | 25-27 | 64 | 119-120 | 172-173, 177 | 193, 201 | 223, 230 | 286, 289 |
| Winkelgriffe mit Brausehalter | | | 123 | 177 | 201 | 230 | 289 |
| Z ahnbecherhalter | 94 | 102 | 150 | 263 | 263 | 263 | |
| Zahnglas | 94 | 102 | 150 | | | | |
| Zahnglashalter | 94 | 102 | 150 | 263 | 263 | 263 | |
| Zertifikate | 457-463 | 457-463 | 457-463 | 457-463 | 457-463 | 457-463 | |

Alphabetical index

| | Cavere Care | | Inox Care | Nylon Care | | | Smart & Special Care |
|--|-------------|---------------|--------------|--------------|--------------|--------------|----------------------|
| | Cavere | Cavere Chrome | | Verso Care | Nylon 300 | Nylon 400 | |
| A dipositas | | | | | | | 284-291 |
| Adjustable mirror | 48 | | 140 | | 212 | 252-253 | |
| Antibacterial protection | 496 | 496 | | 496 | 496 | 496 | 496 |
| Anti-ligature produkts (-PSY) | | | | | | | 294-299 |
| Armrest, suspendable | 38 | | 130 | | | 238 | |
| Ascento | 320-332 | | | | | | |
| Assistance in planning and installation | 465-499 | 465-499 | 465-499 | 465-499 | 465-499 | 465-499 | 465-499 |
| B ackrest | 24-25 | 62-63 | 118 | | 192 | 222 | |
| Base plate | 18, 34 | 58, 74 | 117 | 171 | | | |
| Bathroom corner shelf | | 101 | | 260 | 260 | 260 | |
| Bathroom glass shelf/ with grab bar | 92 | 103 | 148 | | | 252 | |
| Bathroom shelf | 90-93 | 101-103 | 147-148, 150 | 260-263 | 260-263 | 252, 260-263 | |
| Bathroom ventilator | | | | 277 | 277 | 277 | |
| Buffered coat hook, for panel/wall | | | 155 | 272 | 272 | 272 | |
| C ard frame/Sheet | | | | 277 | 277 | 277 | |
| Ceiling hook/screw | | | | 275 | 275 | 275 | |
| Ceiling hook, turnable | | | | 275 | 275 | 275 | |
| Ceiling support | 39 | 78 | 132 | 180 | 205 | 241 | 294, 297 |
| Certificates | 502-508 | 502-508 | 502-508 | 502-508 | 502-508 | 502-508 | |
| Coat hanger | | | | 272 | 272 | 272 | |
| Coat hook | 98 | 105 | 155-156 | 272 | 272 | 272 | 296 |
| Corner shower rail | 29, 32-33 | 68, 70-72 | 121, 124-125 | 175, 179 | 197, 200-201 | 225, 228-231 | 288 |
| Cover plate blind | 18, 34 | 58, 74 | 117 | 171 | 189 | 221 | |
| Curtain ring | 42 | 80 | 134 | | | 241 | |
| D ouble hook | 98 | 105 | 156 | 273-275 | 273-275 | 273-275 | |
| Double coat hook | 98 | 105 | 156 | 273-275 | 273-275 | 273-275 | |
| Doorstop hook | | | 155 | 272 | 272 | 272 | |
| E lectric button/Lift-up support rail | 19-20 | 59-60 | 114-115 | 168-169 | 190 | 218 | 303-312 |
| F ixing-Set | 364-374 | 364-374 | 364-374 | 364-374 | 364-374 | 364-374 | |
| G lass panel clamp, piece | | | 148 | | | | |
| Glass holder/with glass tumbler | 94 | 102 | 150 | 263 | 263 | 263 | |
| Glass shelf / ...with grab bar | 92 | 103 | 148 | | | 252 | |
| Grab bar | 28 | 66 | 121 | 174 | 194-196 | 224 | 287 |
| Grab bar with towel rail | 28 | | | | | | |
| Grab rail | 25-27 | 64 | 119-120 | 172-173, 177 | 193, 201 | 223, 230 | 286, 289 |
| Grab rail with shower head holder | | | 123 | 177 | 201 | 230 | 289 |
| H older for hair-dryer | 94 | 105 | | | | | |
| Hygiene bag dispenser | 89 | | 145 | 256 | 256 | 256 | |
| Hook | 98 | 105 | 155-156 | 272-276 | 272-276 | 272-276 | 296 |
| I nstallation aid for grab bar | 373 | 373 | | | | | |
| L amp | 49 | | 141 | | 212 | 254 | |
| Lift-up shower seat | 34-35 | 74-75 | 126-127 | 182-183 | 202-203 | 232-234 | 290-291 |
| Lift-up shower seat with backrest | 36-37 | 76-77 | 128-129 | | 204 | 236-240 | |
| Lift-up shower seat with floor support | | | | 183 | | | 291 |
| Lift-up shower seat with padded seat | 35-37 | 75-77 | 127-129 | | 203 | 233, 236-239 | |
| Lift-up support rail | 16-23 | 56-61 | 112-116 | 164-169 | 188-191 | 216-219, 221 | 284-285 |
| Lift-up support rail with remote control | 21 | 61 | 116 | 167 | 189 | 219 | 313-318 |
| M aintenance and cleaning | 499 | 499 | 499 | 499 | 499 | 499 | 499 |

Alphabetical index

| | Cavere Care | | Inox Care | Nylon Care | | | Smart & Special Care |
|---|-------------|---------------|--------------|--------------|--------------|---------------|----------------------|
| | Cavere | Cavere Chrome | | Verso Care | Nylon 300 | Nylon 400 | |
| Mirror /-holder | 97 | | 140 | 270 | 212, 270 | 252-253, 270 | |
| Mounting plate/mounting plate blind | 368 | 368 | 368 | | 203, 368 | 235, 368 | |
| O perating handle | 49 | | 141 | | 212 | 254 | |
| P added armrest | 38 | | 130 | | | 238 | |
| Padded backrest | 24-25 | 62-63 | 118 | | 192 | 222 | |
| Paper roll holder / ...to be added at a later stage | 18, 27, 88 | 58, 65, 100 | 117, 144 | 171, 258 | 191, 258 | 220, 258 | |
| Partition door lock/mortise bolt lock | | | 338 | 350-351 | 350-351 | 350-351 | |
| Partition walls | | | 334-344 | 345-360 | 345-360 | 345-360 | |
| PSY | | | | | | | 294-299 |
| R emote control/ ... to be added at a later stage | 21 | 61 | 116 | 167 | 189 | 219 | 313-318 |
| Retaining clamp | | | 148 | | | | |
| Rinsing glass/ holder | 94 | 102 | 150 | 263 | 263 | 263 | |
| S afety support rail | | | | | | 220 | |
| Shower basket/box | 90-91 | 101 | 147 | 260-261 | 260-261 | 260-261 | |
| Shower curtain | 41, 43 | 79, 81 | 133, 135 | 181 | 207 | 243, 245, 247 | |
| Shower curtain 2 parts | | | | | | 245 | |
| Shower curtain rail with curtain rings | 40, 42 | 78, 80 | 132, 134 | 180 | 206 | 242, 244, 246 | 294-298 |
| Shower guard curtain | 45 | 83 | 137 | | 209 | 249 | |
| Shower guard rail / ...removable | 44 | 82 | 136 | | 208 | 248 | |
| Shower handrail | 29, 31-33 | 66, 68-72 | 121, 123-125 | 175, 178-179 | 197, 199-201 | 225, 228-231 | 288 |
| Shower handrail with shower head rail | 31-33 | 69-72 | 123-125 | 178-179 | 199-201 | 228-229, 231 | |
| Shower head holder | 30 | 67 | 122 | 176 | 198 | 226 | |
| Shower head rail / ... with shower head holder | 30-33 | 67-72 | 122 | 176 | 198-199 | 226-227 | 288, 299 |
| Soap dish / dispenser | 93 | 102 | 149-150 | 262-263 | 262-263 | 262-263 | |
| Spacer | 30 | | | | | | |
| Spare toilet roll holder | 88 | 100 | 144 | 259 | 259 | 259 | |
| Stainless steel cleaner | | 106 | 157 | | | | |
| Stool/padded seat | 39 | | 131 | 184 | 204 | | |
| Support foot | | | 337 | 348 | 348 | 348 | |
| Suspendable shower seat | 34-35 | 74-75 | 126-127 | 182-183 | 202-203 | 232-234 | 290-291 |
| Swivel towel holder | 96 | 103 | 151 | 264 | 264 | 264 | |
| Symbol | | | 157 | 277 | 277 | 277 | |
| T oilet brush set/Toilet brush/ Toilet brush head | 89 | 100 | 146 | 256-257 | 256-257 | 256-257 | |
| Toilet roll holder | 18, 27, 88 | 58, 65, 100 | 117, 144 | 171, 258 | 191, 258 | 220, 258 | |
| Towel holder | 28, 96 | 103-104 | 151 | 264-267 | 194, 264-267 | 264-267 | 296 |
| Towel or tissue roll holder | | | | 264 | 264 | 264 | |
| Towel rail | 28, 96 | 103-104 | 151 | 264-267 | 194, 264-267 | 264-267 | 296 |
| Tube board bracket | | | 342 | 358 | 358 | 358 | |
| Tumbler | | | | 263 | 263 | 263 | |
| Tumbler holder/with Nylon tumbler/rinsing glass | 94 | 102 | 150 | 263 | 263 | 263 | |
| V ario lift-up shower seats | 34 | 74-75 | | | | | |
| Vario showerguard rail | 44 | 82 | 136 | | | | |
| Vario lift-up support rails | 17-21 | 56-61 | 112-116 | 164-169 | | | |
| Vario wall support | 46-47 | 84-85 | 138-139 | 170 | | | |
| W alking aid holder | 95 | | | | | | |
| Wash basin | 50 | 86 | | | | | |
| Wall support rail | 46-47 | 84-85 | 138-139 | 170 | 210-211 | 250-251 | |
| Wall support rail / padded armrest | | | | | | 217 | |
| Waste bin | 95 | 106 | 153-154 | 269, 271 | 269, 271 | 269, 271 | |

